

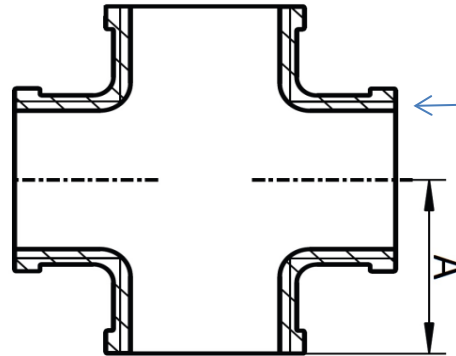
ART. 76

Raccordi a croce, aisi 316 / A4

Cross pipe fittings, aisi 316 / A4

Esecuzione: Microfusione

Execution: Microcasting



Filettatura: conforme a EN 10226-1 (EX ISO 7-1)  
(filetto maschio conico, filetto femmina cilindrico)

Conicità 1:16 sul diametro

Angolo del filetto 55°

Pressione massima d'esercizio 150 Lbs (Libbre) = 10,34 BAR PN10

Thread: according to EN 10226-1 (EX ISO 7-1)  
(conical male thread, cylindric female thread)

Taper 1:16 on diameter

Angle of threads 55°

Maximum operating pressure 150 lbs = 10,34 Bar PN 10



Codice Articolo Item Number	M size	DN/ID	A (mm)	Box
76-4-18	1/8"	6	14/15	5
76-4-38	3/8"	10	20,8/21	5
76-4-12	1/2"	15	25	5
76-4-34	3/4"	20	27,5/30	5
76-4-1	1"	25	33/36	5
76-4-1-1/2	1"1/2	40	43/46	5